

36° Stormo
BRIEFING
Missione: Op. Pachanga

84ma Squadriglia

Callsign pilota compilatore: Harley

- **DATA: 12-01-2017 ORA: 15:35**
- **METAR: Vento 4 Km/h/220° – CAVOK 20 QNH 1013**
- **TA/TL: solo QNH 29.92 durante l'intera missione**

Aeroporto: MAYKHOP 125.000 Mhz Runway 04

Aeroporti alleati: MAYKOP-KHANSKYA

Bullseye: FARP MADRID N42°45'01" E041°44'53"

Nome pacchetto: Pig1:1-4 NET 38

Velivoli pacchetto – 4xA10CII

PIG1: 1681-1682-1683-1684

PIG2: 1685-1686

RADIO

Frequenza: comune tra pacchetto Pig1 e Pig2 VHF 128.150 Intrapacchetto PIG1 UHF 308.150
PIG2 309.150

Ente: DRAGON PURPLE19 FM 50.000 Mhz

TASK PG1

TASK Strike TARGET AR1_GJ39

ROE

WEAPON FREE- Take OFF TIME > 16:05

Giunti su IP per ingresso su target chiede clearance a Dragon

FLIGHT PLAN PG1

Decollo da MAYKHOP Take OFF TIME > 16:05

IP: 37T FK 80147 04835 12.000 ft.

TGT: 37T GJ 36646 98875 759 ft.

PAYLOAD

4 x AIM9M

1 x TGP

3 x AGM65D

3 x AGM65H

4 x GBU12

1 x LAU 131 M151 7X2.75' HE APKWS

FUEL 90%

FLARE 300 CHAFF 180

ALTRE INFO

• CODEWORDS:

- ROLEX + "Minuti": es Rolex+10 vuol dire che tutti gli orari assegnati vengono spostati in avanti di 10 minuti!

Dopo il decollo OBBLIGO eseguire CheckIn su AWACS o C2 rispettando la seguente sintassi: "*Nome Destinatario–CallSign Volo–Numero componenti Volo–Task Volo – Posizione (BE o aeroporto di partenza)*". es "Magic, Colt1, 4 ship, SEAD with HARM, airborne from Incirlick"

Chevy 1: Take OFF TIME > 15:55

Colt 1: Take OFF TIME > 15:57

Ford 5: Take OFF TIME > 15:59

Dodge 2: Take OFF TIME > 16:01

Chevy 2: TIME > 16:03

Pig 1: Take OFF TIME > 16:05

Ford 2: Take OFF TIME > 16:07

Colt 2: Take OFF TIME > 16:09

Colt 3: Take OFF TIME > 16:10

Colt 4: Take OFF TIME > 16:11

Dodge 1: Take OFF TIME > 16:13

Ford 3: Take OFF TIME > 16:15

Ford 4: Take OFF TIME > 16:16

Chevy 3: Take OFF TIME > 16:17

Ford 1: Take OFF TIME > 16:18

DCS SERVER

Name:[ITA] AF – AlliedForces.eu – Interforze [ITA]

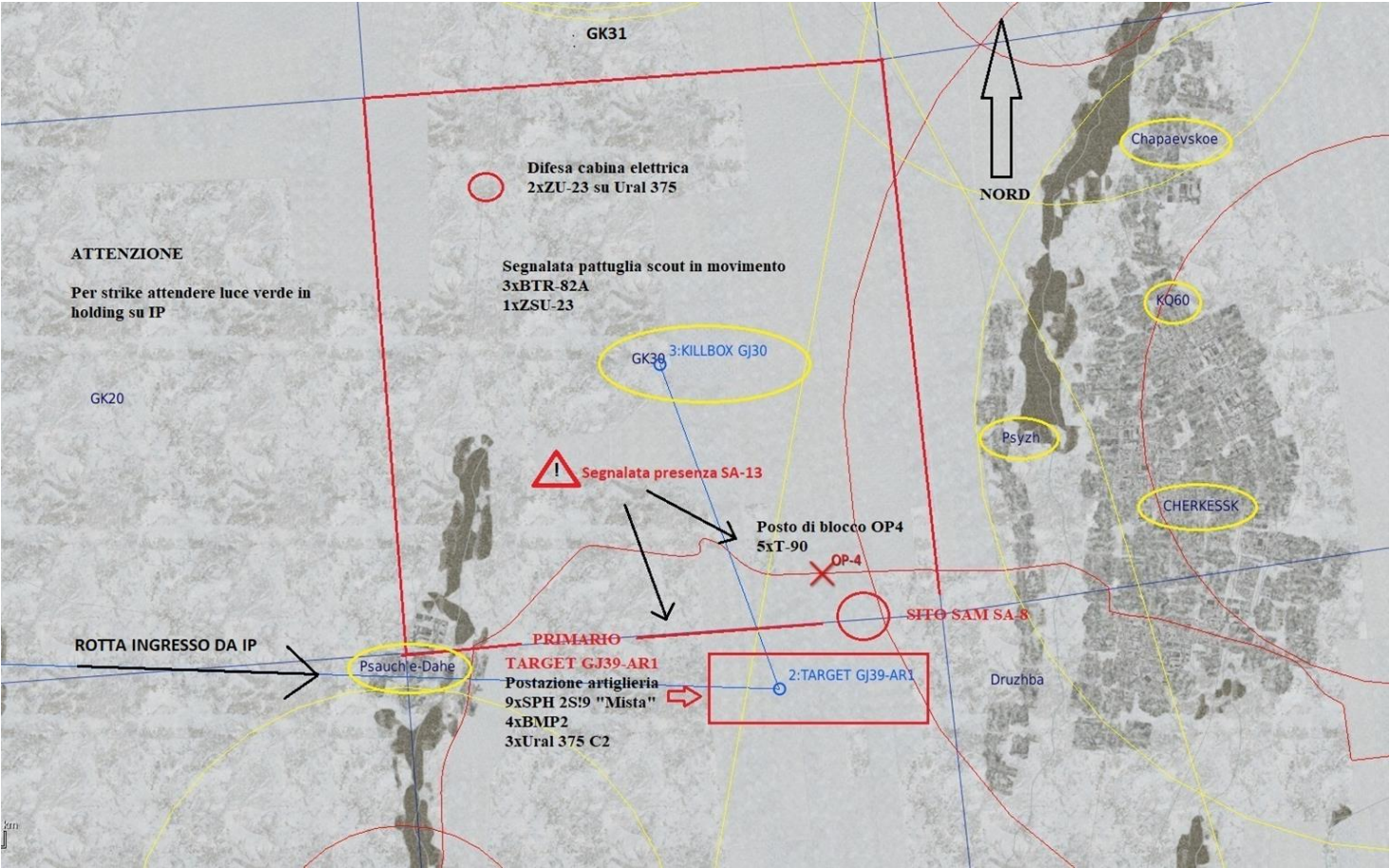
Ip:138.201.226.58 Port: 10310 Psw:Communicated in vocal briefing

SRS SERVER

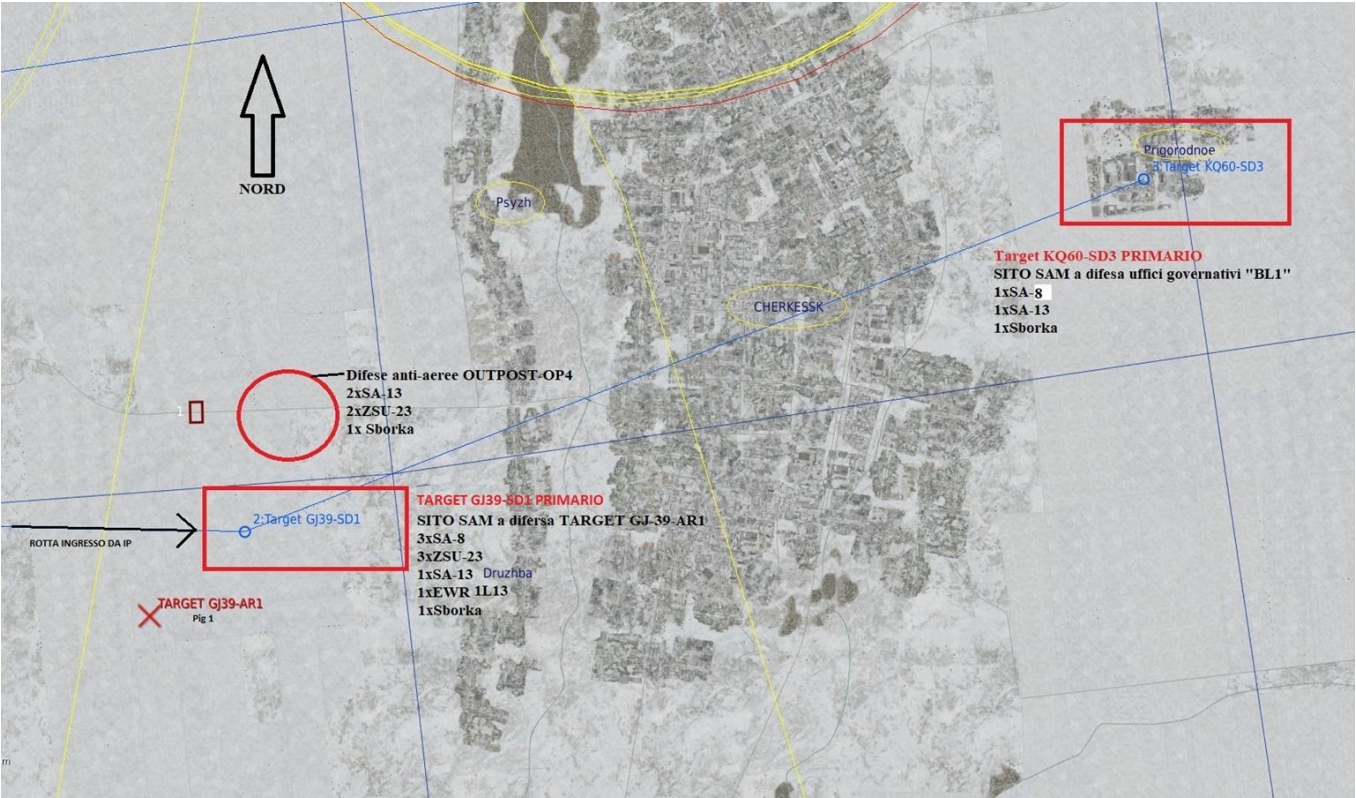
Autoconnect Available Ip:138.201.226.58 Port: 5004

ENTE	CALLSIGN	FREQ	NOTA 1	NOTA 2
AWACS HUMAN	MAGIC	AMBER 04		
JSTAR HUMAN	OVERLORD	BLUE 06		
C2 HUMAN	DRAGON	PURPLE 19	CH 8 x Mil-8 e Ka50	CH RG x SA-342
TANKER	SHELL	BLACK 40	KC-135MPRS	TACAN 37X
TANKER	ARCO	BLACK 41	KC-135	TACAN 38X
TANKER	TEXACO	BLACK 42	KC-135	TACAN 39X
FARP	PERTH	WHITE 29	NO ATC	NDB 700KHz
FARP	ROME	WHITE 30	NO ATC	NDB 1210 KHz
FARP	DALLAS	WHITE 31	NO ATC	NDB 500KHz
FARP	MADRID	WHITE 32	NO ATC	
AIRPORT	MAYKHOP	125.00	HUMAN ATC	

Task Pig 1



Task Pig 2

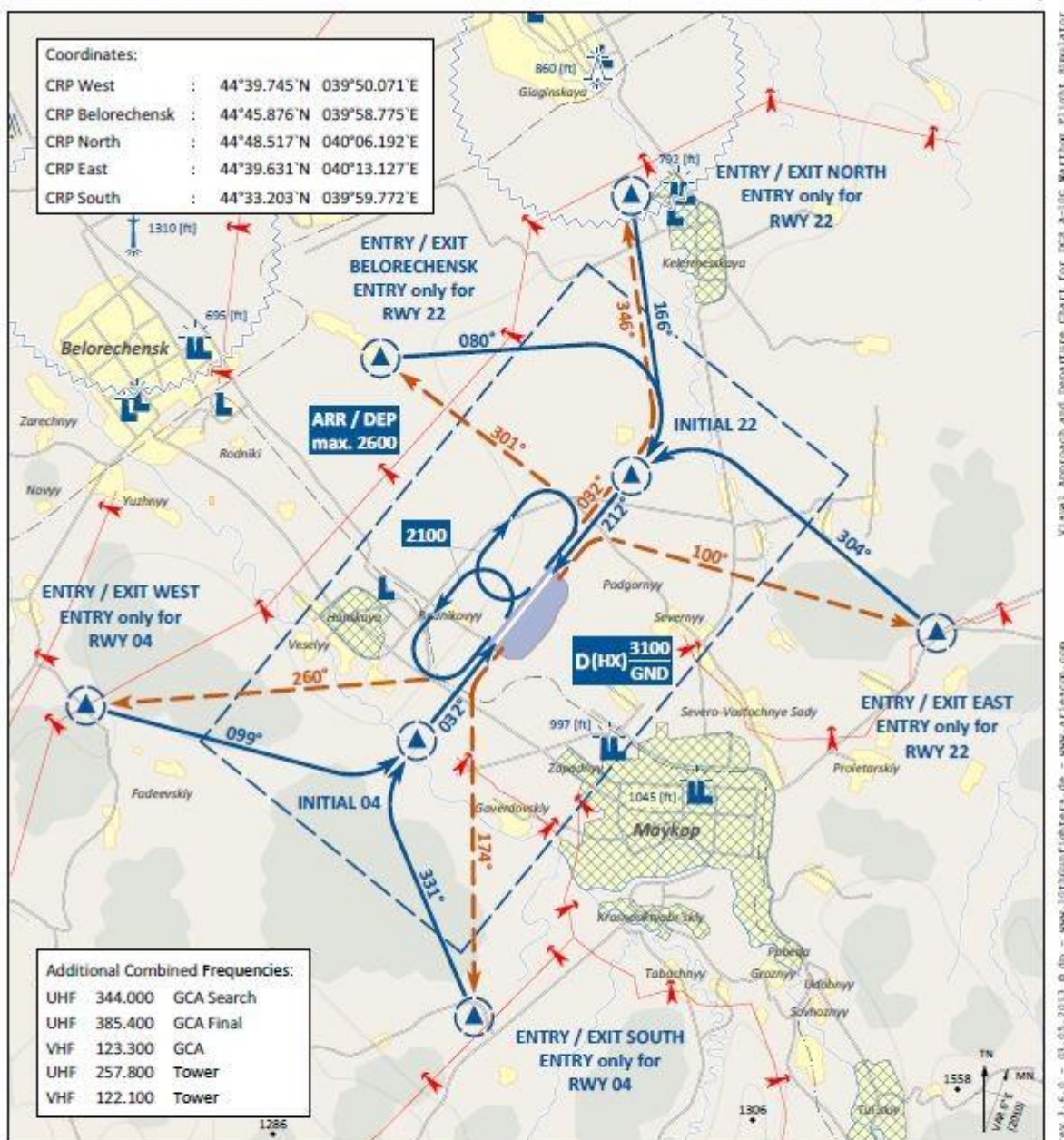


CH	NAME	FM	VHF	UHF
AMBER	AMBER 01			315.250
	AMBER 02			335.500
	AMBER 03		132.300	
	AMBER 04			275.250
	AMBER 05			366.500
BLUE	BLUE 06			295.000
	BLUE 07			331.500
	BLUE 08		131.750	
RED	RED 09		124.750	
	RED 10			345.250
	RED 11			299.100
GREEN	GREEN 12		128.750	
	GREEN 13			288.500
	GREEN 14			291.250
PURPLE	PURPLE 15	55.5		
	PURPLE 16	59.9		
	PURPLE 17		126.500	
	PURPLE 18			347.250
	PURPLE 19	50		
	PURPLE 20	40		
	PURPLE 21		125.550	
YEL.W	YELLOW 22		136.400	
	YELLOW 23			226.000
	YELLOW 24			231.300
ORANGE	ORANGE 25	47.6		
	ORANGE 26		137.250	
	ORANGE 27			301.200
	ORANGE 28			296.700
WHITE	WHITE 29			237.650
	WHITE 30			230.750
	WHITE 31			245.500
	WHITE 32			243.950
	WHITE 33			327.500
	WHITE 34			343.950
	WHITE 35			343.150
PINK	PINK 36	52.5		
	PINK 37	48.5		
	PINK 38		135.750	
BLACK	BLACK 39		135.950	
	BLACK 40			251.550
	BLACK 41			277.300
	BLACK 42			305.500
	BLACK 43			333.000
EMR	VIOLET 44			243.0 (G)
	VIOLET 45		121.5 (G)	
HQ	OLIVE 46			362.800

AIRCRAFT	C/S	VHF	UHF	FM	LEADER		WINGM	
AV8B	DODGE 2	124.150	304.150		1	Y	64	Y
	DODGE 4	125.150	305.150		3	Y	66	Y
A10C II	PIG 1	128.150	308.150	42.5	9	Y	72	Y
	PIG 2	129.150	309.150	44.5	11	Y	74	Y
	TUSK 1	130.150	310.150	45.5	13	Y	76	Y
	TUSK 2	131.150	311.150	46.5	15	Y	78	Y
	HAWG 1	135.150	315.150	47.5	8	Y	71	Y
F14B	CHEVY 1	132.150	312.150		17	Y	80	Y
	CHEVY 2	133.150	313.150		19	Y	82	Y
	CHEVY 3	134.150	314.150		21	Y	84	Y
F18C	COLT 1	136.150	316.150		25	Y	88	Y
	COLT 2	137.150	317.150		27	Y	90	Y
	COLT 3	138.150	318.150		29	Y	92	Y
	COLT 4	124.250	319.150		31	Y	94	Y
	COLT 5	126.150	306.150		5	Y	68	Y
AJS37	DODGE 6	125.250	320.150					
	DODGE 8	125.350	311.200					
HELO ATTACK	ENFIELD 1	127.250	322.150					
	ENFIELD 2	128.250	323.150					
	ENFIELD 3	131.850	336.150					
	UZI 3	132.850	337.150					
	UZI 4	133.850	338.150					
	UZI 5	134.850	339.150					
	PONTIAC 1	135.850	340.150					
	PONTIAC 2	126.250	321.150					
	PONTIAC 3	127.150	307.150					
HELO LOGY	SPRINGFIELD 1	129.250	324.150					
	SPRINGFIELD 2	130.250	325.150					
	SPRINGFIELD 3	128.850	333.150					
	SPRINGFIELD 4	129.850	334.150					
	SPRINGFIELD 5	131.250	326.150					
	SPRINGFIELD 6	132.250	327.150					
F16C	FORD 1	133.250	328.150		33	Y	96	Y
	FORD 2	134.250	329.150		35	Y	98	Y
	FORD 3	135.250	330.150		37	Y	100	Y
	FORD 4	136.250	331.150		39	Y	102	Y
	FORD 5	137.250	332.150		41	Y	104	Y
JF17	DODGE 5	127.850	347.150			Y		Y
M2000	DODGE 1	130.850	335.150		45	Y	108	Y
	DODGE 3	125.850	305.170		46	Y	109	Y

Purple19 non è Playboy ma Dragon

TYPE	CALLSIGN	FREQ	TCN	ICLS	Descr.
AWACS IA	Magic	AMBER 01	n/a	n/a	IA
AWACS IA	Focus	AMBER 02	n/a	n/a	IA
AWACS Hum.	Magic	AMBER 04	n/a	n/a	Human
AWACS Hum.	Focus	AMBER 05	n/a	n/a	Human
C2 Hum.	Eyeball	PURPLE 15	n/a	n/a	Tac - Comm
C2 Hum.	Ultra	PURPLE 16	n/a	n/a	Tac - Comm
C2 Hum.	Playboy	PURPLE 19	n/a	n/a	Tac - Comm
C2 Hum.	Tango	PURPLE 20	n/a	n/a	Tac - Comm
JTAC Hum.	Axeman	PINK 35	n/a	n/a	Tac - Comm
JTAC Hum.	Jaguar	PINK 36	n/a	n/a	Tac - Comm
JTAC Hum.	Playboy	PINK 37	n/a	n/a	Tac - Comm
LHA -1	Tarawa	WHITE 29	TRW 78X	5	FREE
CVN 73	Washington	WHITE 30	C73 73X	3	SC
CVN 71	Roosevelt	WHITE 31	C71 71X	4	SC
CVN 72	Lincoln	WHITE 32	C72 72X	5	SC
CVN 74	Stennis	WHITE 33	C74 74X	2	FREE
CV 59	Forrestal	WHITE 34	C59 59X	6	FREE
CV 75	Truman	WHITE 35	C75 75X	7	SC
B52	Pontiac 10	BLACK 39	B52 52X	n/a	b52
KC -135MPRS	Texaco 1-1	BLACK 40	TX0 36X	n/a	tk1 Basket
KC -135MPRS	Shell 1-1	BLACK 41	SHL 37X	n/a	tk2 Basket
KC -135	Arco 1-1	BLACK 42	AR1 38X	n/a	tk3 Boom
KC -135	Arco 2-1	BLACK 43	AR2 39X	n/a	tk4 Boom



PSN THR	VAR	ARP	ELEV	Scale 1:200'000
RWY 04 44° 40.257' N 040° 01.276' E	6° E	44° 40.874' N	591 [ft]	0 1 2 3 4 5 6 7 [km]
RWY 22 44° 41.494' N 040° 02.946' E	(2010)	040° 02.112' E	180 [m]	0 1 2 3 [NM]

1. Landing instructions shall be requested latest 2 minutes prior to reaching ENTRY CRP
2. Avoid overflying of densely populated areas
3. Warning: ENTRY NORTH RWY 22 and EXIT NORTH RWY 04: Procedures not usable for HIRTA sensitive ACFT

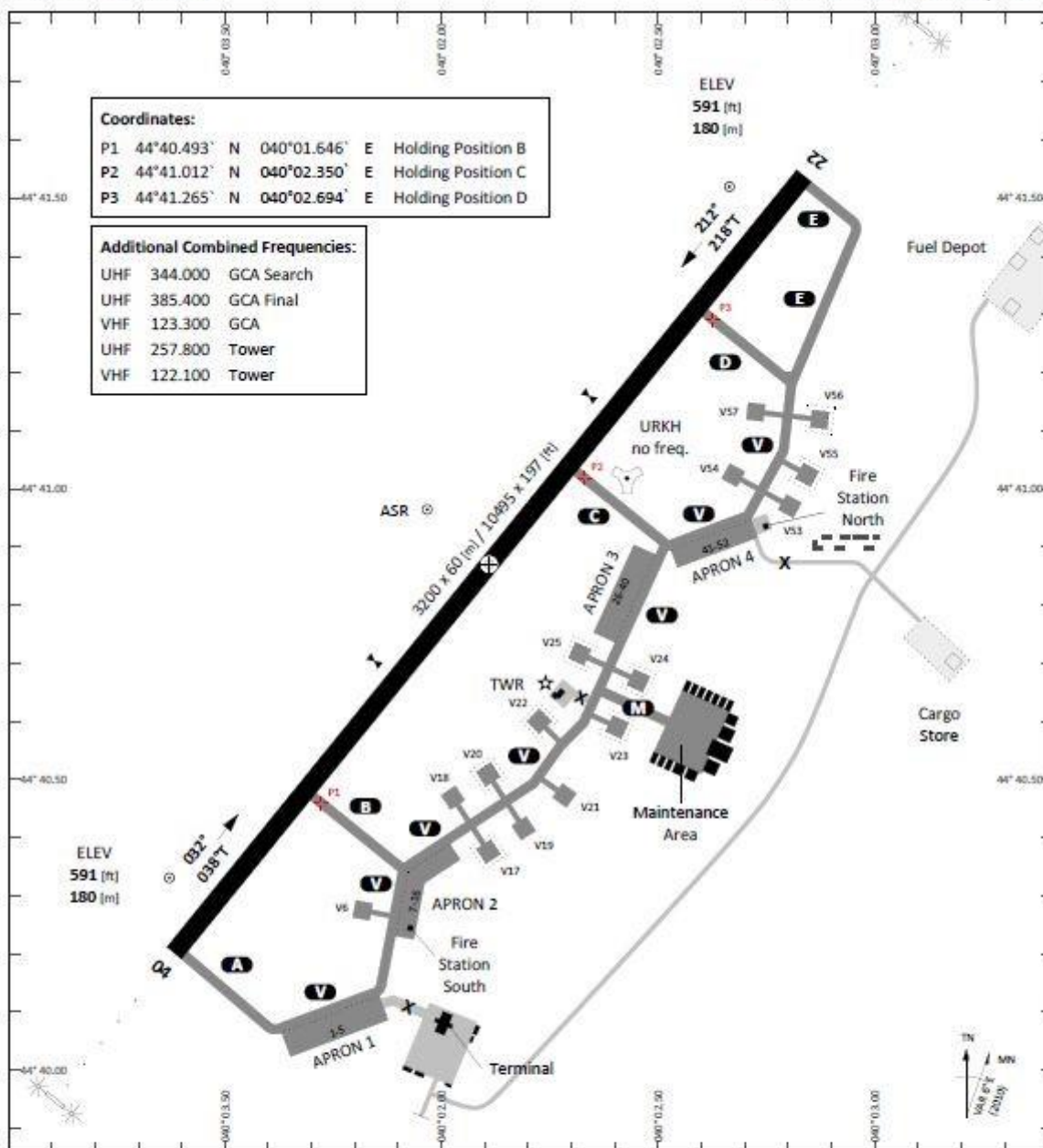
Tower	Radar	Final - Precision	TACAN	ILS		
125.000 MHz						

TERPS
AERODROME CHART

GND 12

- 24 -

MAYKOP - KHANSKAYA (URKH)



Ground chart for 303 A-100 Warbird 4. Planning cliffs 3 flight simulator
rev 3.6.0 - 03.05.2013 © dp - www.100warbirders.de - www.aerodrom.com

PAR	RWY	CAT	MINIMA	ARP	ELEV	Scale 1:16'000 0 200 400 600 [m] 0 500 1000 1500 2000 [ft]	
SRA	04 - 22	A B C D E	791 - 0.8 200 (200-0.8/1.6) GS 3°	44° 40.874' N 040° 02.112' E	591 [ft] 180 [m]		

RWY	TORA	TODA	ASDA	LDA	PSN THR	ALS
04	10495 [ft] 3200 [m]	10495 [ft] 3200 [m]	10495 [ft] 3200 [m]	10495 [ft] 3200 [m]	44°40.257'N 040°01.276'E	⊕
22	10495 [ft] 3200 [m]	10495 [ft] 3200 [m]	10495 [ft] 3200 [m]	10495 [ft] 3200 [m]	44°41.494'N 040°02.946'E	⊕

Tower	Radar	Final - Precision	TACAN	ILS		
125.000 MHz						

AERODROME CHART

MAYKOP - KHANSKAYA (URKH)

RIGHT: 100WBRD SIMULATOR

